



Visual Story and Access Guide

Digital Abyss

30 June – 19 July 2026



Contents

Before the event p.5

- Tickets
- Companion Card
- Essentials
- What to Bring

Parking and Transport p. 7

Access Overview p. 8

- Site Overview
- Ground Surfaces
- Lighting and Sound
- Sensory Information

Relaxed Sessions p. 9

Facilities and spaces p. 10

- Facilities and Accessible Toilets
- Food and Drink
- Staff

Visual Story p. 13

- Entry and Exit
- Lift and Stairs
- Exhibition space

What is a Visual Story and Access Guide?

This visual story and access guide will show you what to expect when attending Illuminate Adelaide's *Digital Abyss* event at ILA Immersive Light & Art.

We provide information around the physical and sensory accessibility at the event, as well as details around the event itself, and Relaxed Sessions.

You can read through this before you go so that you can get to know the path, the facilities, and who to ask for help.

This guide was created by Illuminate Adelaide and reviewed by Access2Arts.

For more information, please contact Illuminate Adelaide:

Website: <https://www.illuminateadelaide.com/program/season-2026/digital-abyss/>

Access Page: <https://www.illuminateadelaide.com/visit/access/>

Email: hello@illuminateadelaide.com

Call: 1300 496 623

Fill out our [Accessibility Enquiry Form](#)

What is Digital Abyss?

Digital Abyss by artist Miguel Chevalier, is an immersive exhibition inspired by the deep ocean. Music is by Jacopo Baboni Schilingi.

There is an evolving digital seascape on curved screens at *Digital Abyss*, alongside artworks shaping a glowing digital environment.

Running from Tuesday 30 June – Sunday 19 July, *Digital Abyss* takes place at ILA Immersive Light & Art. The exhibit invites you to step inside, slow down, and discover a hypnotic space where technology and nature drift together.

Relaxed Sessions are available with reduced capacity and lowered sound levels. Find more details on page 9.



Alt Text: A silhouette of a person sitting on a bench in front of a vibrant, colourful light display featuring shades of blue and purple with abstract patterns.

Before the event

Tickets

You will require a purchased ticket to enter *Digital Abyss* at ILA Immersive Light & Art. Book tickets online here: <https://www.illuminateadelaide.com/program/season-2026/digital-abyss/>

There is a Box Office at the entry to *Digital Abyss* at ILA, on level 1.

Companion Card

Illuminate Adelaide honours the Companion Card scheme and card holders are entitled to a second ticket to *Digital Abyss* for their companion at no cost.

Please email us at hello@illuminateadelaide.com or call **1300 496 623** with your order number, and companion card number and we will add a ticket to your booking.

Assistance Animals

Accredited assistance dogs are welcome at ILA Immersive Light & Art. Proof of accreditation may be required.

Essentials

Please be advised this exhibit is immersive with low lighting levels and UV light.

Please allow 30-45 minutes to enjoy the full *Digital Abyss* experience at your leisure.

For access enquiries please fill out our [Accessibility Enquiry Form](#), or contact our friendly team via phone 1300 496 623 or email hello@illuminateadelaide.com

For more information about accessibility at ILA, visit their website:
<https://immersivelightandart.com.au/access/>

What to Bring

We welcome any sensory aids you may require to make your experience more comfortable (e.g. noise cancelling headphones, fidget tools, sunflower lanyard).

Parking and Transport

ILA is located at 63 Light Square, Adelaide.

Parking

Undercover and open-air paid parking options are available at the adjacent Light Square Karidis car park, or nearby UPark Light.

Directly in front of ILA, along Light Square, there are ticketed parking spaces which are free after 6pm on weekdays and after 12pm on Saturdays. There is one **accessible parking bay** at the northern end of this street parking section.

Public Transport

ILA is a 15 minute walk from the Adelaide Railway Station, and is accessible via a range of nearby bus and tram routes.

Taxi or Rideshare

There is space out the front of the building for passenger pick up and drop off. Drivers can use the parking bays to safely pick up and drop off passengers. Find accredited passenger booking services online [here](#). The nearest dedicated taxi zone is located north along Morphett Street, just before reaching the Hindley Street intersection.

Access Overview

Site Overview

This is an indoor event. There is a lift available to level 1. Staff will be present should you have any questions throughout the experience. Attendees can move freely between the Gallery and Studio spaces in ILA. There is a well-lit ILA Bar nearby on level 1, with pram parking, and food and beverage available for purchase.

Ground Surfaces

The pathways through ILA are simple to navigate. There is step-free entry and hard tiled surface. On level 1, there is concrete flooring within the Gallery space, and carpet within the Studio space.

Sensory Information: Light and Sound

There is low lighting and UV light. There is an immersive soundscape that may be loud for some people. There are digital screens with slow moving and brightly coloured images.

Our friendly staff are happy to answer any questions you may have on the day of attendance.

Relaxed Sessions

Illuminate Adelaide is proud to offer *Digital Abyss* Relaxed Sessions. Book a Relaxed Session [here](#) online.

Dates and Times: Select sessions on Sunday 5 July, Wednesday 8 July, and Thursday 16 July

Relaxed sessions will include reduced capacity and lowered sound levels. These sessions are specifically designed to make the experience more accessible for neurodiverse audiences, the Autistic community, and individuals with sensory needs.



Alt Text: A vibrant scene where two people with outstretched arms stand in front of a vivid digital display of colourful, abstract plants.

Facilities and Spaces

Toilets

There is a gender-neutral accessible toilet on level 1 at ILA. There are also female and male toilets within the Gallery space.

Parenting Facilities

The accessible bathroom includes a baby change table.

Food and Drink

Food and beverage is available for purchase within the ILA Bar located on level 1.



Alt Text: Interior view of the accessible bathroom at ILA, with a sink, mirror, and baby change table.



Illuminate Adelaide Staff

Illuminate Adelaide box office staff will be present upon entering *Digital Abyss*.

Illuminate staff wear a black top, with a green Illuminate Adelaide lanyard, and a silver jacket with **Staff** written on the back.

ILA staff will also be present within the venue.

Illuminate Adelaide staff have completed Disability Access and Inclusion training delivered by Access2Arts, as well as safety briefings.

Illuminate Adelaide is proud to be a member of the Hidden Disabilities Sunflower. Staff have completed the awareness training, and wear “I Support The Sunflower” pins.



Alt Text: A staff member in a silver jacket with “Illuminate Staff” printed on the back. Another staff member in the background wears a black long sleeve top with “Staff” printed in green on the back.

Sensory Backpacks

Sensory backpacks are provided for people who may need sensory or communication aids to make their *Illuminate Adelaide* experience more comfortable. Please enquire with our friendly staff at the *Digital Abyss* Box Office.

The *Illuminate Adelaide* sensory backpacks are complimentary and available on a first-come first-serve basis, so we may run out. Learn more [here](#).

You are welcome to bring your own sensory aids to *Digital Abyss*.



Alt Text: A person in a hoodie walks through a vibrant, illuminated cityscape at night with a "Illuminate Adelaide" backpack, creating a lively atmosphere.

Visual Story

ILA: Entry

ILA is in a white building off Light Square.

There is *Digital Abyss* signage and an Illuminate Adelaide light box out the front.

There are two double doors, which are left open.

Entry is step-free.

There is paid street parking available immediately out the front of the venue.



Alt Text: The image shows the entrance of ILA Immersive Light & Art, with Digital Abyss signage on the left.

ILA: Entry Foyer

When entering ILA, there is *Digital Abyss* signage on the left wall, as well as digital signage.

There are steps straight ahead and a lift through a doorway to the right.

It is well-lit.



Alt Text: Colourful Digital Abyss signage on the left of a foyer, with steps at the end of the space leading up to another level. The environment is well-lit and welcoming.

ILA: Lift

The lift is located through an open doorway, to the right of the steps.

It is clearly signed with 'Lift Access' and an arrow.

You will need to turn a short corner to access the lift.

There is an 'Illuminate Adelaide' sticker on the lift button, and you will take the lift to level 1 for *Digital Abyss*.



Alt Text: Black sign with wheelchair symbol and arrow indicates lift access to the right, located between stairs and an open elevator entrance in a well-lit area.



Alt Text: Lift doors in a well-lit setting.

ILA: Steps

There are two sets of steps, separated by a landing, to level 1 and *Digital Abyss*.

The first set has 11 steps. The second set has 10 steps.

They have a gripped surface, and a handrail on either side.



Alt Text: A staircase with grey steps and a handrail, located next to a wall-mounted sign indicating "Bar, Gallery, Studio."



Alt Text: A stairway with a glass railing and metal steps, leading upwards with a tiled floor below.

Level 1

If you came up the steps, there are double doors open, providing entry to level 1. There is a large sign on the wall.

If you came up via the lift, you will enter a small foyer space with a black and white checkered floor.

From this foyer space, entry to *Digital Abyss* is via the doors on the left, and entry to the ILA Bar on the right.



Alt Text: A doorway leading into a space with a sign that reads "ILA" and lists "Bar, Gallery, Studio," featuring a black and white checkered floor.

Level 1: Toilets

A unisex accessible toilet is accessible from the foyer space on level 1.

There is a sign next to the door, showing that it is LH orientation.

The accessible toilet door has a handle, and requires push to open.

There are baby changing facilities here.



Alt Text: A white door with a sign reading "Unisex Toilet" alongside a wheelchair accessible symbol.



Alt Text: Interior view of a bathroom with a toilet, bins, and baby change table.

Level 1: ILA Bar

The ILA Bar is on your right, from the foyer space on level 1.

There is pram parking available, immediately on the left as you enter.

It is spacious, with tables and seating. It is well-lit.

There is food and beverages available for purchase from the counter.

It can be noisy at times.



Alt Text: Interior view of the ILA Bar, featuring wooden tables and chairs, a light colour palette, and large windows.



Alt Text: The ILA Bar counter, displaying pastries and drinks, with two staff members engaged with a customer.

Digital Abyss: Entry

Enter *Digital Abyss* through the doors on the left from the foyer space on level 1.

This is the Box Office, where staff will be present to scan your ticket or answer any questions.

You will then be directed to enter the exhibit through an open doorway.

If many people arrive at the same time, it may get busy here.

At **Relaxed Sessions** there will be less people.



Alt Text: The Box Office counter for the "Digital Abyss" exhibition by Miguel Chevalier, featuring colourful lights and a modern setup with a checkered floor.

Digital Abyss: Gallery

As you enter the exhibition, it is low lit and there is UV lighting. It is a spacious gallery, with artworks on the walls. You can move at your own pace.

There are two digital projections with slow moving, colourful images. There is a digital screen that can be bright.

Seating is available.

There is a music soundscape with deep sea noises.

At **Relaxed Sessions** there is lowered volume.



Alt Text: A dimly lit gallery featuring colourful, abstract artworks on the walls, with purple lighting and decorative objects hanging from the ceiling.

Digital Abyss: Toilets

There are female toilets on the left as you move through the Gallery space.

There are male toilets further on the left, just before the next set of doors.

Both toilets have glowing signage.



Alt Text: A door with a women's restroom sign.



Alt Text: A wall corner with a men's restroom sign and a curtain.

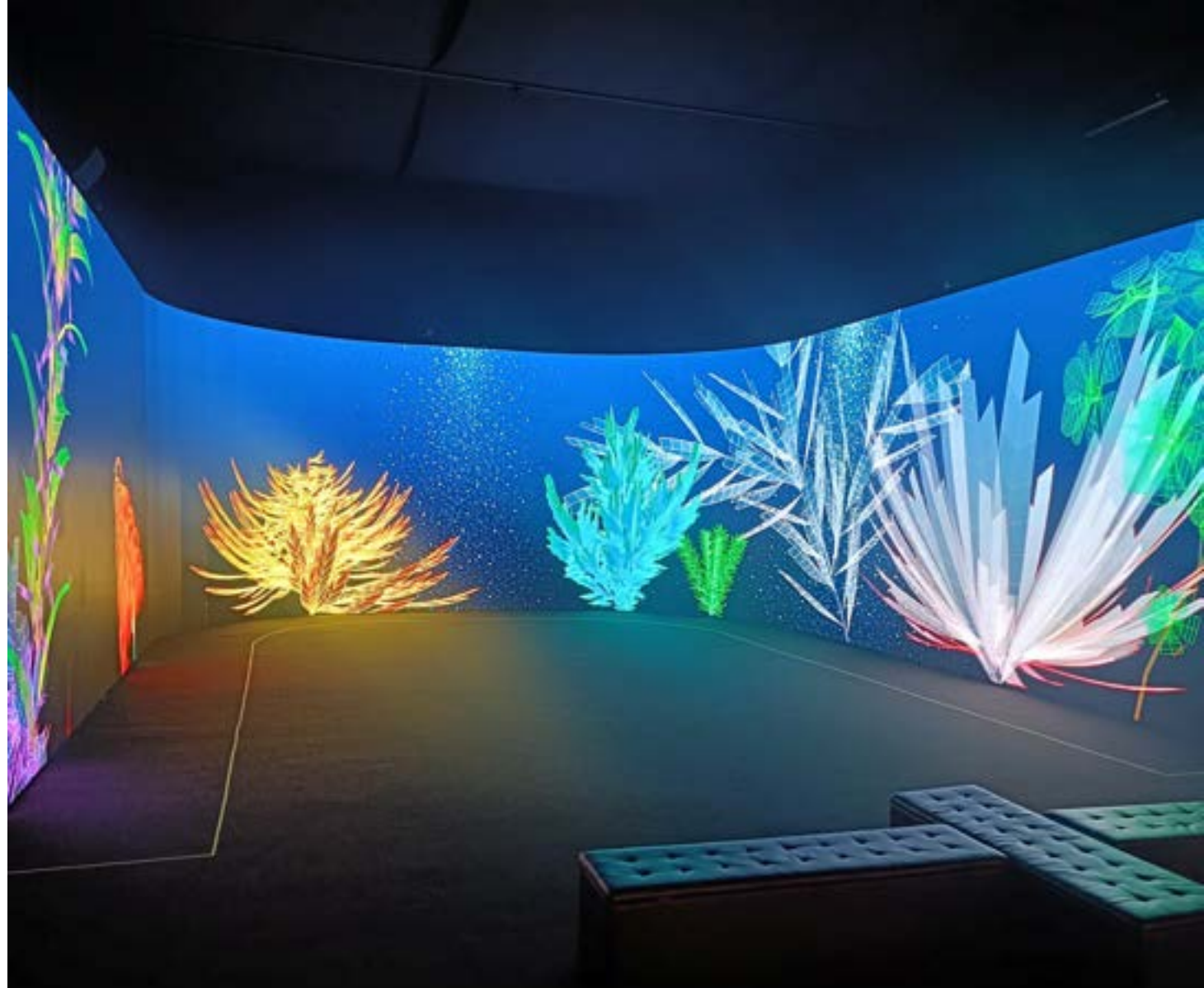
Digital Abyss: Studio

There is another set of open double doors that lead to the Studio space.

There is a large, curved screen on the left, as well as a large screen on the right. The images move as you move towards them.

Seating is available.

The soundscape has deep sea noises and may be loud for some people.



Alt Text: A colourful, digital art installation featuring glowing, abstract plant-like forms displayed on a curved digital screen, with a dark floor and minimalist seating in front.

Digital Abyss: Quiet Room

Just before entering the Studio, on the left, is a black curtain.

Behind this curtain is a corridor, which leads to a well-lit room.

This is a dedicated Quiet Room. If you would like to access it, please ask a staff member.

The room is well-lit, with a couch and a television that will remain off.

There are reduced noises.



Alt Text: A partially open curtain revealing a dimly lit space behind it.



Alt Text: A small room with a black couch, a closed double door, featuring exposed brick walls and carpeted flooring.

Digital Abyss: Exit

Moving back through the Gallery space, you can exit through the same doorway that you came in.

This will lead you back into the level 1 foyer.

An exit is also available through a doorway on the left, within the Gallery space.

This doorway will lead you through some black hanging curtains, into the ILA Bar.



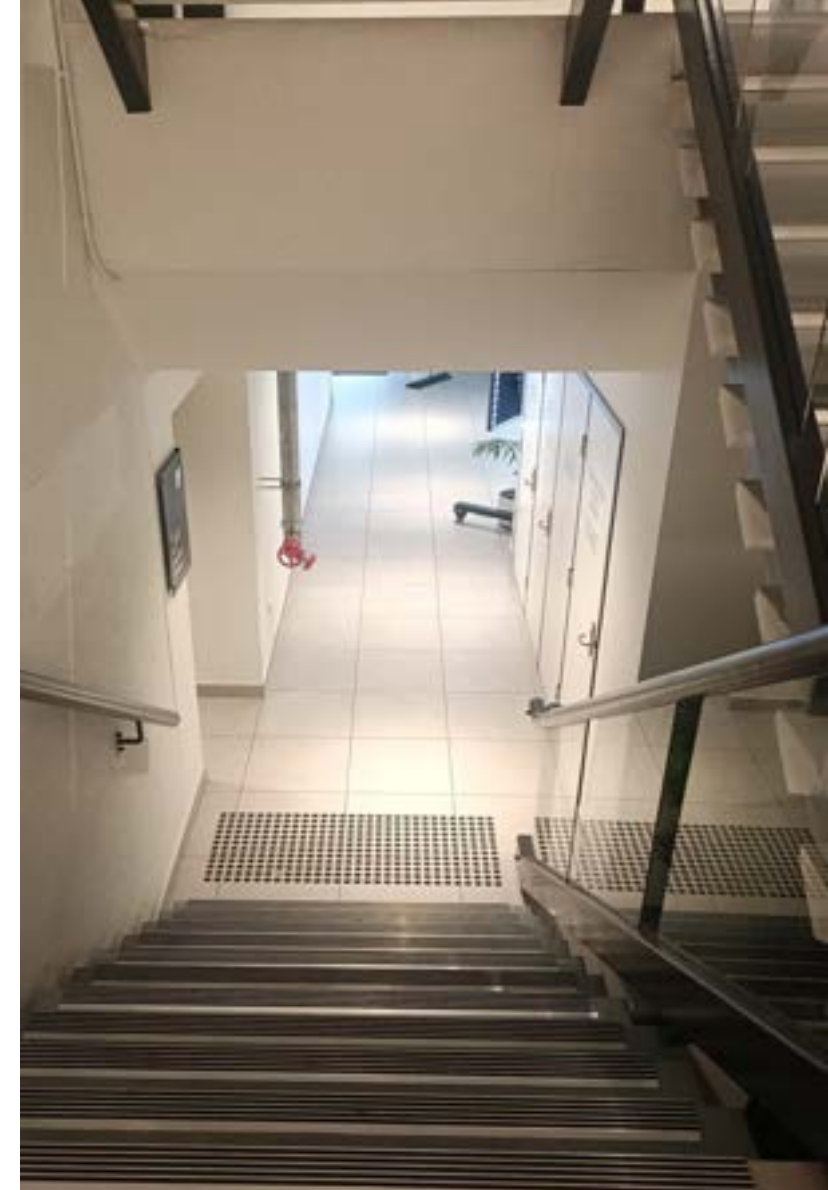
Alt Text: A doorway leading to a black curtain, illuminated by an exit sign above.

Level 1: Exit

Exit level 1 via the lift in the foyer space, or the stairs.



Alt Text: A modern elevator with metallic doors and a control panel beside it, set against a geometric floor design.



Alt Text: A staircase leading down to a lower level, with white walls and modern design elements.

Exit

Exit ILA through the double doors on the ground floor.



Alt Text: An entrance with a glass door leading outside, surrounded by greenery.

Thank you!

We hope you enjoy your time at *Digital Abyss*.

There are more events and displays to explore during Illuminate Adelaide, which can be found on the website: <https://www.illuminateadelaide.com/>

If you have feedback on this Access Guide and Visual Story, or any other access questions, please let us know by filling out our [Accessibility Enquiry Form](#), or contact our friendly team via phone 1300 496 623 or email hello@illuminateadelaide.com